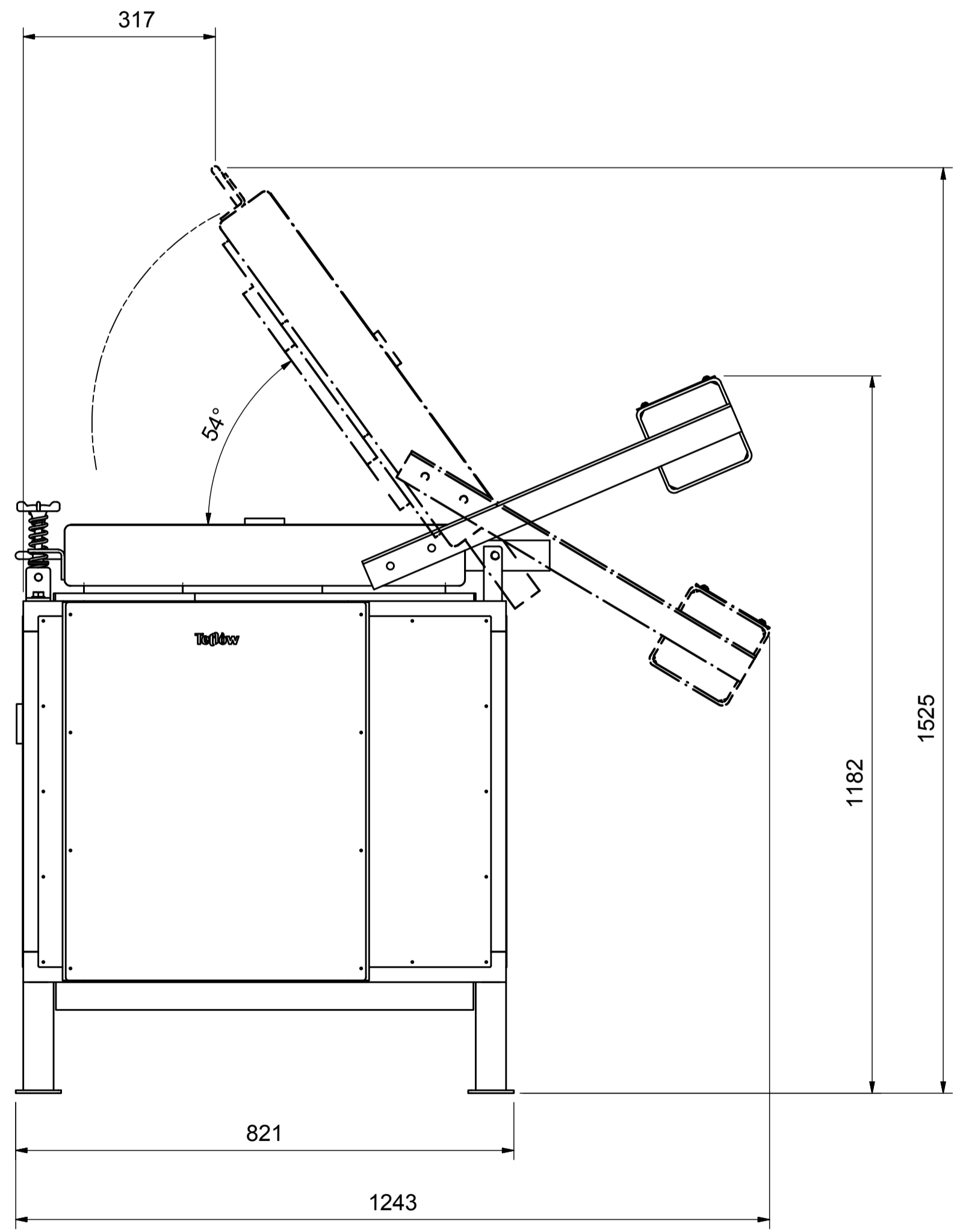
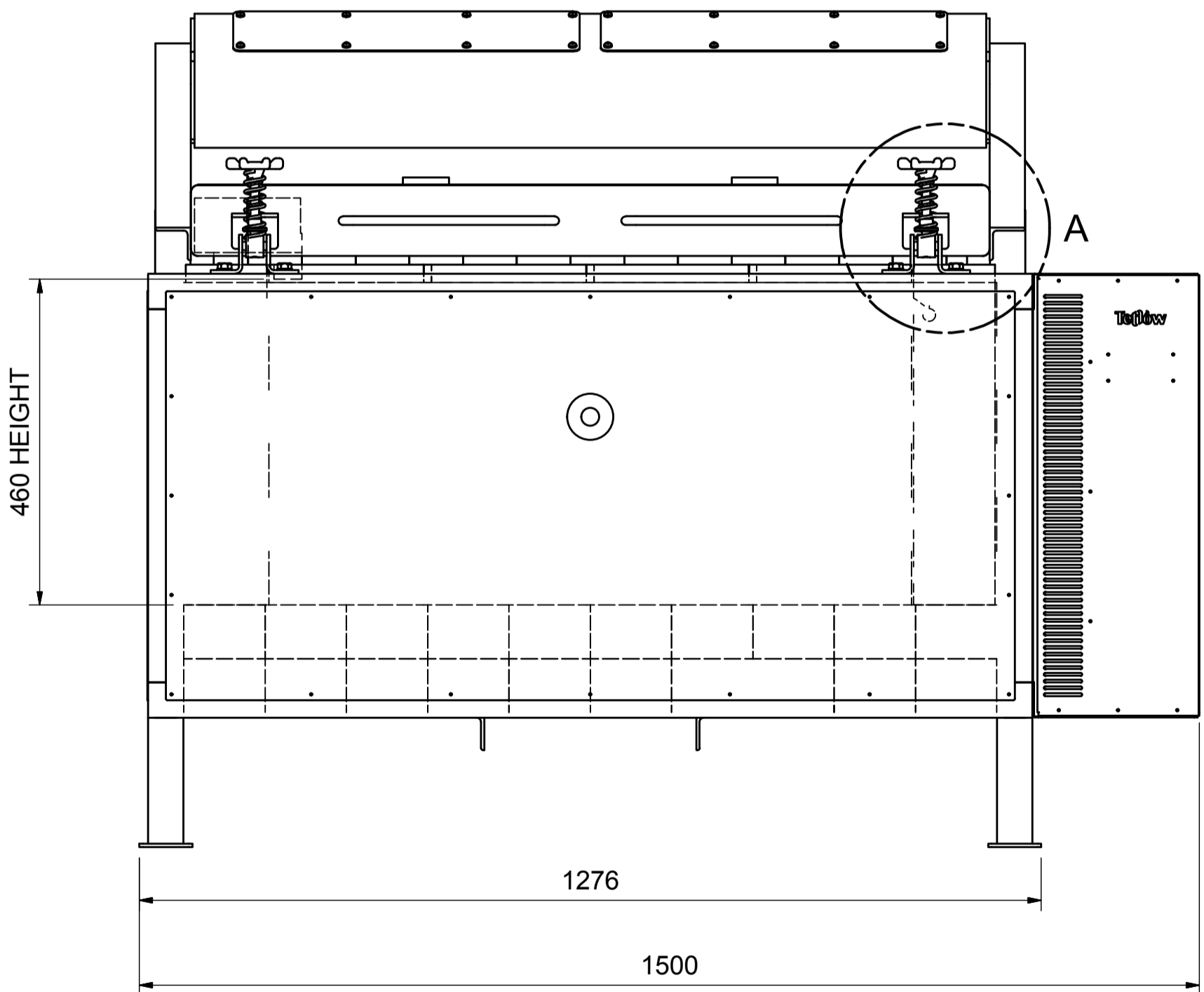
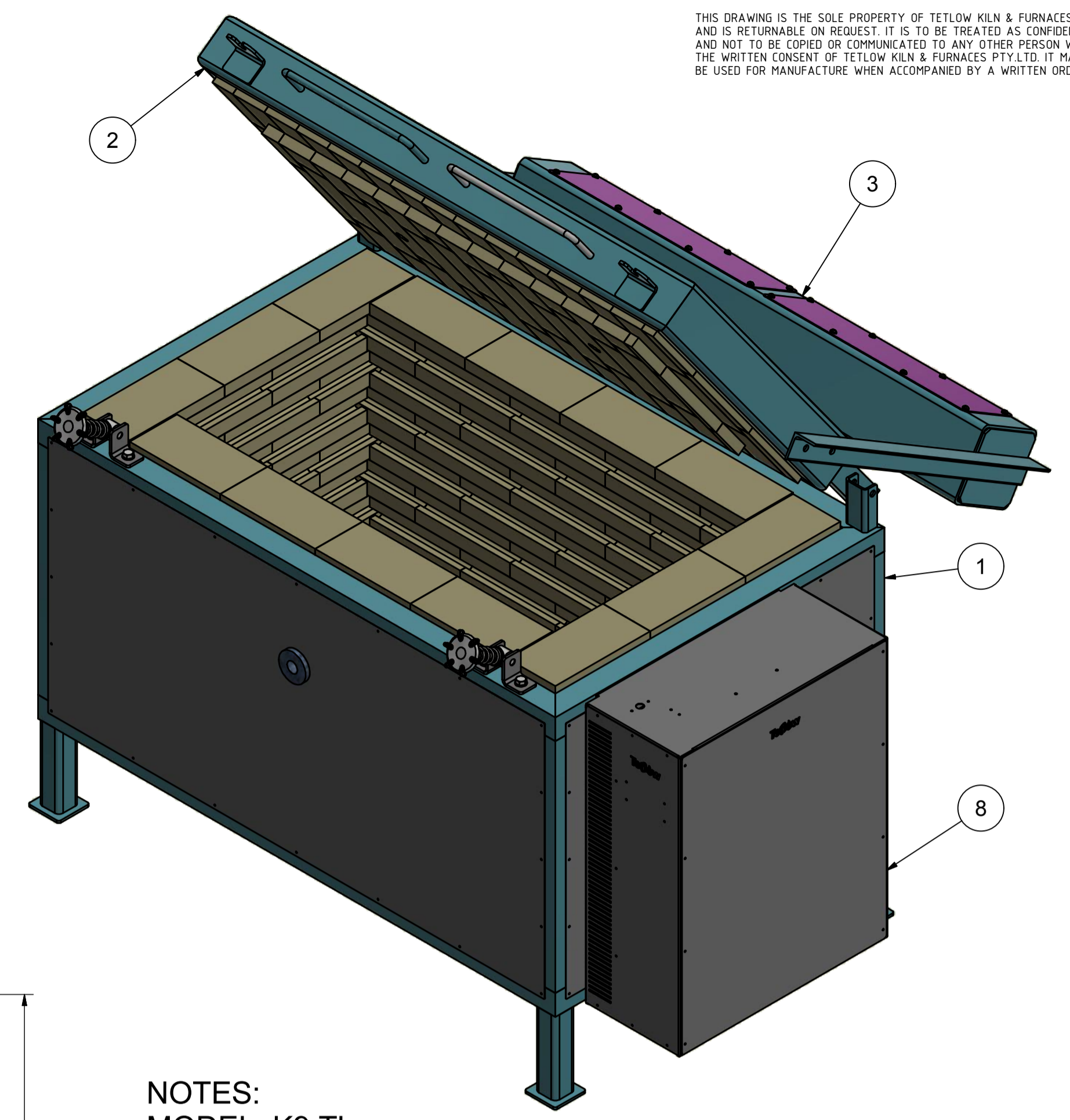
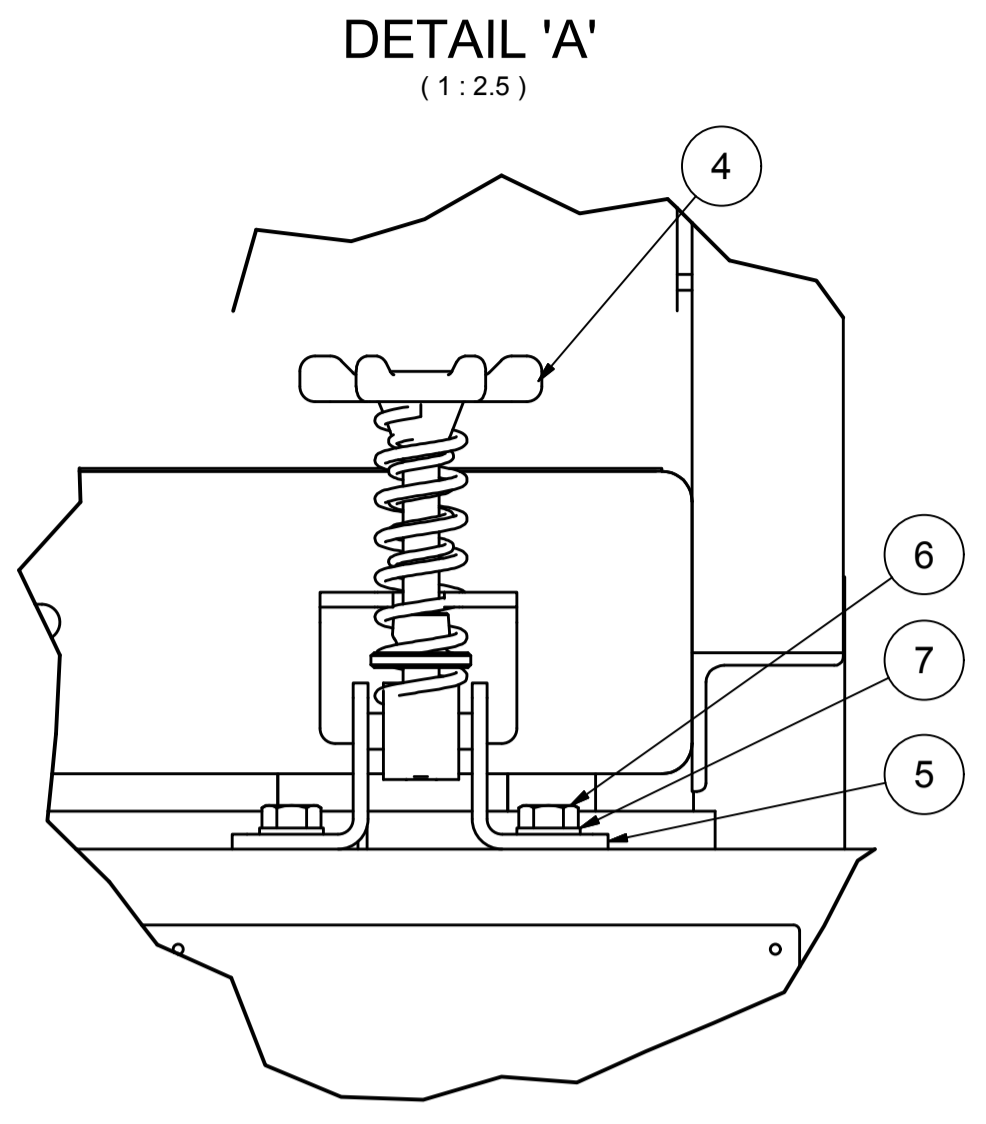
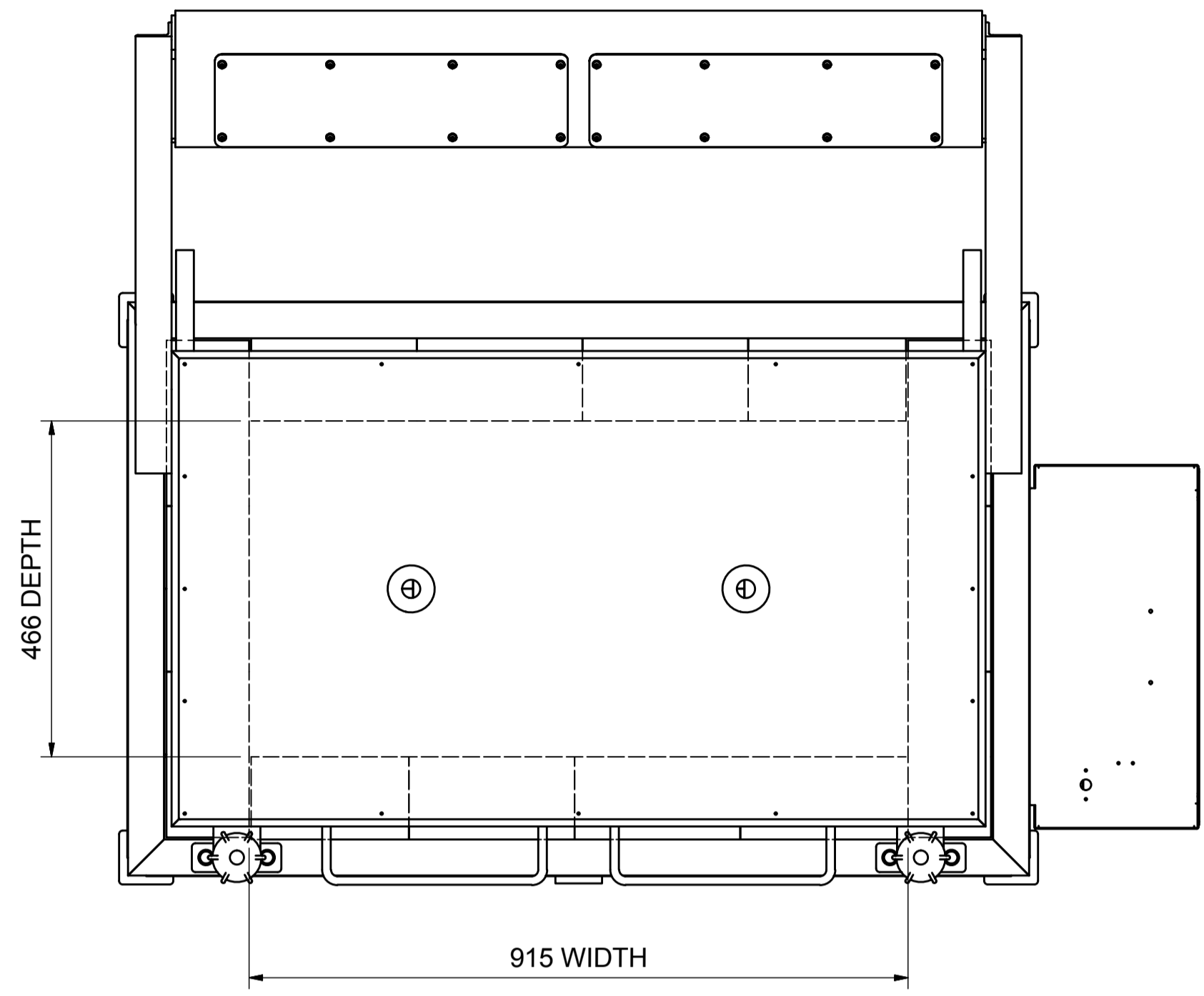


THIS DRAWING IS THE SOLE PROPERTY OF TETLOW KILN & FURNACES PTY.LTD. AND IS RETURNABLE ON REQUEST. IT IS TO BE TREATED AS CONFIDENTIAL, AND NOT TO BE COPIED OR COMMUNICATED TO ANY OTHER PERSON WITHOUT THE WRITTEN CONSENT OF TETLOW KILN & FURNACES PTY.LTD. IT MAY ONLY BE USED FOR MANUFACTURE WHEN ACCOMPANIED BY A WRITTEN ORDER.



NOTES:
 MODEL: K9 TL
 INTERNAL DIMS: 915mmW x 460mmD x 460mmH
 EXTERNAL DIMS: 1500mmW x 1243mmD x 1182mmH
 REFRACTORY: LBK 23 BRICKS
 FRAME: MILD STEEL
 OUTER CASING: 304 STAINLESS STEEL
 TEMPERATURE: MAX 1280°C
 ELECTRICAL POWER
 3 PHASE, 415V, 20amps, 14.4kW
 KILN PROGRAM
 1 - PROGRAMMER FITTING
 2 - SR 92
 3 - STAFFORD
 ADDITIONAL OPTIONS
 2 - FLOOR VENT SYSTEM
 FOR ADDITIONAL OPTION - REFER TO SEPERATE DRAWING

Parts List				
ITEM	QTY	DESCRIPTION	PART NUMBER	DRAWING No.
1	1	BODY		K9 TL/002
2	1	LID		K9 TL/005
3	1	COUNTER WEIGHT		K9 TL/008
4	2	FRONT HANDLE ASSEMBLY	TET-K 0032	TET-K 0032
5	4	Front Load Handle Boss Mount Angle	TET-K 0019	TET-K 0019
6	4	M10 x 20 Hex Hd Bolt Gr 4.6 Z/P		
7	4	M10 FLAT WASHER		
8	1	CONTROL BOX		K9 TL/011

NO	DESCRIPTION	REV BY	DATE	APPR BY
A	ORIGINAL RELEASE - NOT FOR MANUFACTURE	C.H.	23 JULY 20	
B	RELEASED FOR MANUFACTURE	C.H.	23 JULY 20	T.N.

WELD NOTES
 1. CARBON STEEL STRUCTURAL WELDING TO AS 1554.1 G.P. WITH 100% VISUAL EXAMINATION, 5% VISUAL INSPECTION U.N.O.
 2. STAINLESS STEEL STRUCTURAL WELDING TO AS 1554.6 CATEGORY 2, CLASS C, SURFACE FINISH III WITH 100% VISUAL SCANNING, 5% VISUAL EXAMINATION U.N.O.
 3. ALL WELDS TO BE CONTINUOUS 0.7 x MIN. PLATE THICKNESS U.N.O.
 4. WELD DETAILS COVERED BY NOTES 1, 2 & 3 ARE NOT SHOWN ON THE DRAWING
 5. CARBON STEEL WELDING CONSUMABLES TO AS 1554.1 SECTION 2.3
 6. STAINLESS STEEL WELDING CONSUMABLES TO AS 1554.6 SECTION 2.3
 7. ELECTRODE SELECTION AS PER AS 1554.6 TABLE 4.5.1 U.N.O.

GENERAL NOTES
 1. ALL ROLLED STEEL SECTIONS TO BE IN ACCORDANCE WITH AS3679.1-300 AND CURRENT BHP STRUCTURAL SHAPES
 2. ALL RHS & CHS TO BE GRADE 350 TO AS1163
 3. ALL BOLTS AND NUTS TO BE IN ACCORDANCE WITH AS1111, AS1112, AS1110, AS1252 UNLESS OTHERWISE NOTED.
 4. DO NOT SCALE

SURFACE FINISH		TOLERANCES	
AS 1100	MAX. CLA	AS 1100	MAX. CLA
NO. MIC	EQUIV	NO. MIC	EQUIV
25um		25um	
1.6um		1.6um	
6.3um		6.3um	
1.6um		1.6um	

RELEASED FOR MANUFACTURE

	Tetlow TETLOW KILNS & FURNACES A.B.N. 26 166 832 3000 54	A1
	K9 TL KILN GENERAL ARRANGEMENT	
THIRD ANG. PROJ. AUST STD AS1100	DESIGNED: C.HILLIER DRAWN: C.HILLIER DATE: 5/06/2020 CHECKED: D.BOISSEZON APPROVED: T.NASH SCALE: 1:7.5	DRG. NO. K9 TL/001
INVENTOR CAD FILE No. K9 TL 001 B.idw	CLIENT	SHT. NO. 1 of 1

©COPYRIGHT TETLOW KILNS & FURNACES 2020